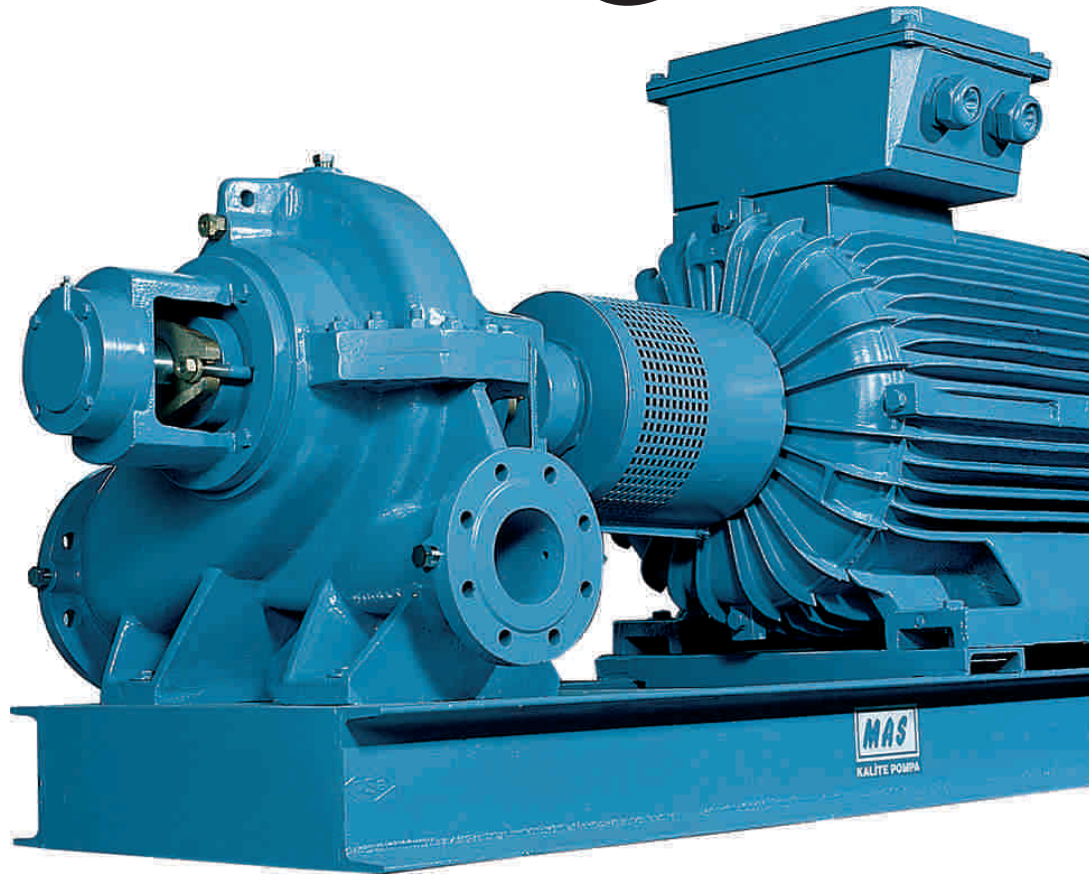


SPLT – SPLT.M - Series

# axially split case double suction pumps

## SPLT – SPLT.M



Horizontal Axis , Axially Split Case Pumps for waterworks, irrigation and drainage pumping stations, industrial water supply systems , fire fighting systems, marine applications as well as general applications in refineries.

Capacity: up to 2100 m<sup>3</sup>/h

Total heads : Up to 160m.

Speeds : 960 – 1200 – 1450 – 2900 – 3500 RPM.

Operating pressure: 16-20 Bar



MAS Pompa Sanayi A.fi.

Head Office: Ataflehir Bulvarı, Ata Çarşı  
K:4 No:59 34758 Ataflehir - ISTANBUL / TURKEY  
Tel.: +90 216 456 12 00 Fax: +90 216 456 25 00  
e-mail: masgrup@masgrup.com  
http : //www.masgrup.com

# general specifications

## Fields of Application

- Water supply and booster stations
- Irrigation , overhead irrigation
- Drainage stations
- Power stations
- Industrial water supply systems
- Fire fighting systems
- Marine applications
- General applications in refineries.

## Pumped Liquids

Thin ,clean , non –aggressive and non explosive liquids free from large solid particles or fibres.

## Design

Single or double stage , axially split casing pumps with double entry , radial impeller . Bigger sizes are double volute construction . Double entry, closed impeller is hydraulically thrust compensated. Lower casing is in-line design , suction and discharge nozzles are on the same line . Upper casing self-aligning and , therefore easy to mount. Thanks to double suction impeller, the NPSH values are reduced and the high suction lifts are possible.

Two different design can be applicated:

- 1- Long shaft design: For soft packing stuffing box the length of the pump shaft is longer. It is also possible to use mechanical seal on this design.
- 2- Short shaft design: For mechanical seal applications, shaft length can be reduced. So a very compact and rigid pumps are available.

You can see concerned technical drawings at the next page.

Pump and motor are separate components connected to each other via flexible coupling and mounting on a base plate .As well as the electric motor it is also available coupled to diesel engine.

## Bearings

At the drive end a cylindrical roller bearing, and on the dead end a deep groove ball bearing are installed. Both of them are grease lubricated.

## Shaft Seal

Uncooled soft packed stuffing box with lantern ring is essential for the long shaft design. There is a leakage setting device on the washing water line of packing. Different types of mechanical seals are available on long or short shaft design pumps.

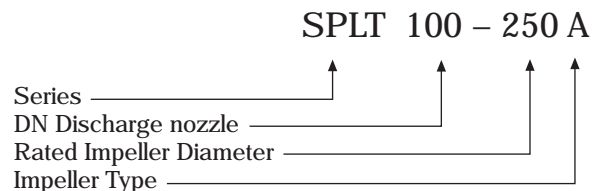
## Technical Data

- Suction nozzle..... : DN 80-DN 250
- Discharge Nozzle..... : DN 65- DN 200
- Operating Pressure..... : 16 - 20 Bar.
- Speed Range..... : 960 – 3600 RPM.
- Capacity Range..... : 30.....900 m<sup>3</sup> /h
- Total Head Range..... : 15.....160 m.

## Pump Flanges

- Discharge flanges : DIN 2533 – PN 16
  - Suction Flanges : DIN 2533 – PN 16
- ANSI , BS or other flanges are also Available on demand.

## Identification Code



## Materials

Volute Casing :

Cast Iron( GG-25),  
Ductile Iron (GGG-40),  
Cast Steel (G5-45)  
Stainless Steel (SS 304-SS 316)  
Cast Bronze (G-CuSn 10)

Impeller :

Cast Iron( GG25),  
Bronze, or Stainless Steel (SS304-316)

Shaft :

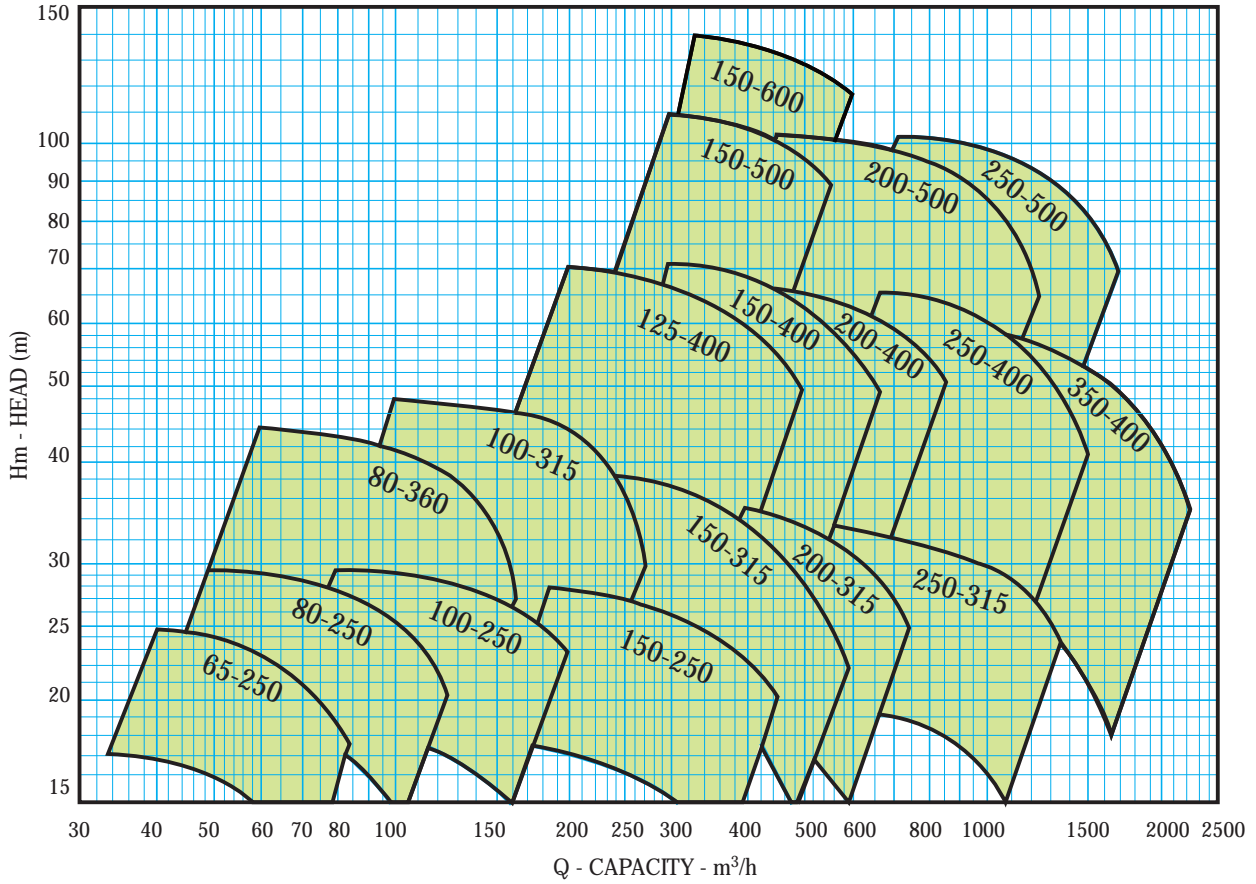
Carbon Steel (C60),  
Chromium Steel (SS 420)  
or Stainless Steel (SS304- 316 )

Casing Wear Ring:

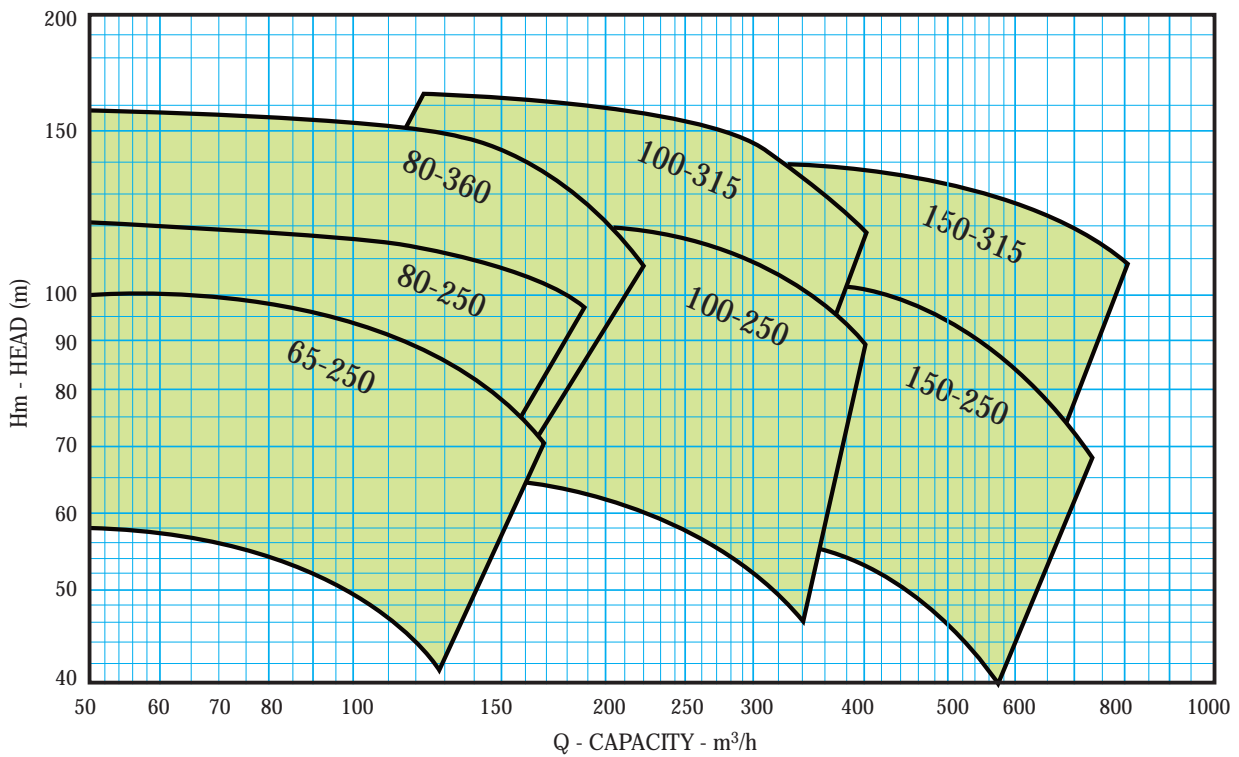
Bronze, Chromium  
Steel or Stainless Steel

# performance range

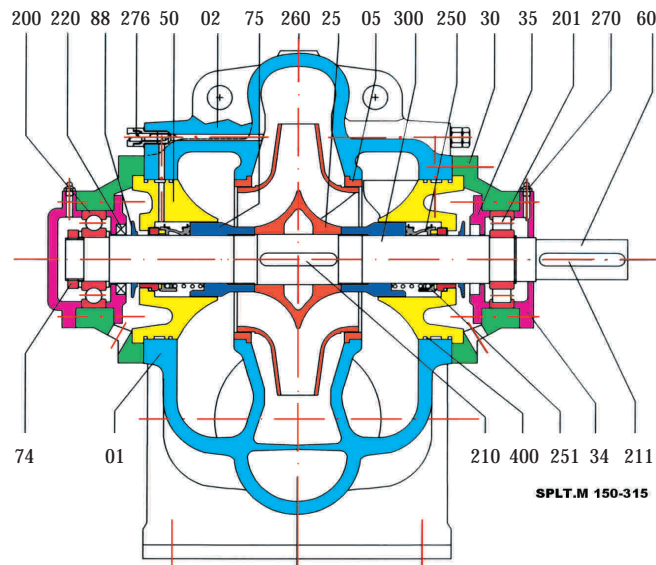
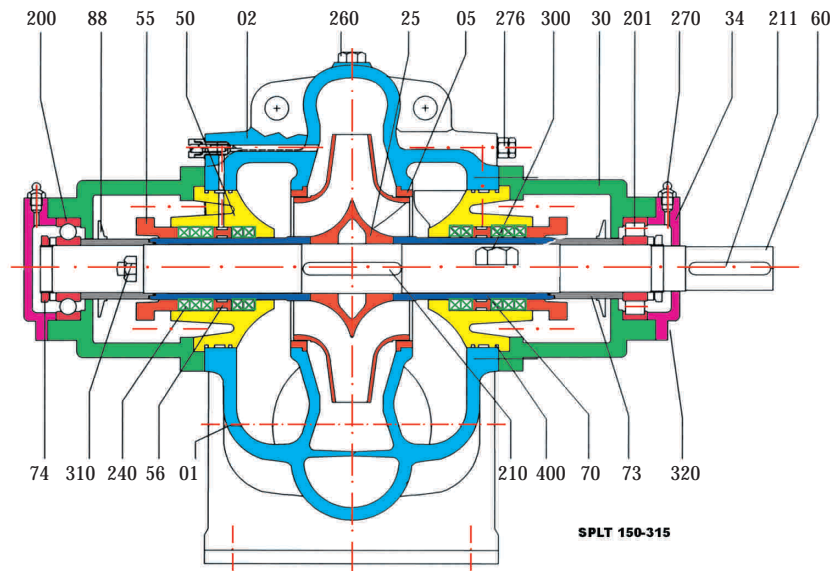
## PERFORMANCE RANGE (1450 RPM)



## PERFORMANCE RANGE (2900 RPM)



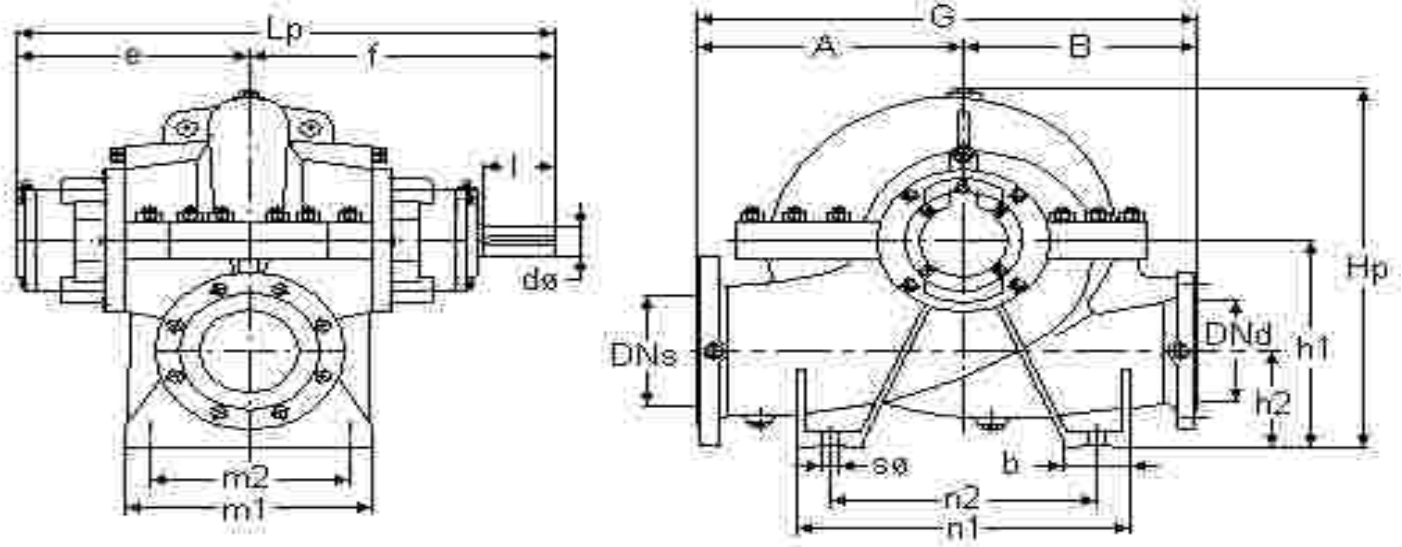
# sectional drawings & parts list



## Parts List

Part Number	Part Name (Standard Pump Parts)	Part Number	Part Name (For Optional Applications)
01	Casing (Lower Part)	200	Ball Bearing
02	Casing (Upper Part)	201	Roller Bearing
05	Casing Wear Ring	210	Key For Impeller
25	Impeller (Double Suction)	211	Key For Coupling
30	Bearing Housing	220	Lip Seal
34	Bearing Cover (Coupling Side)	240	Soft Packing
35	Bearing Cover (Inner Side)	250	Mech Seal ( Rubber Bellow Type)
50	Stuffing Box	251	Mech. Seal:( Single Spring or other Types)
55	Gland	260	Plug
56	Lantern Ring	270	Greaser
60	Pump Shaft	276	Adjusting Tap
70	Bushing For Seal	300	Casing Stud & Nut
73	Spacer Sleeve	310	Gland Stud & Nut
74	Shaft End Nut	320	Hex. Bolts
75	Shaft Nut and spacer	400	O-Ring
88	Thrower		

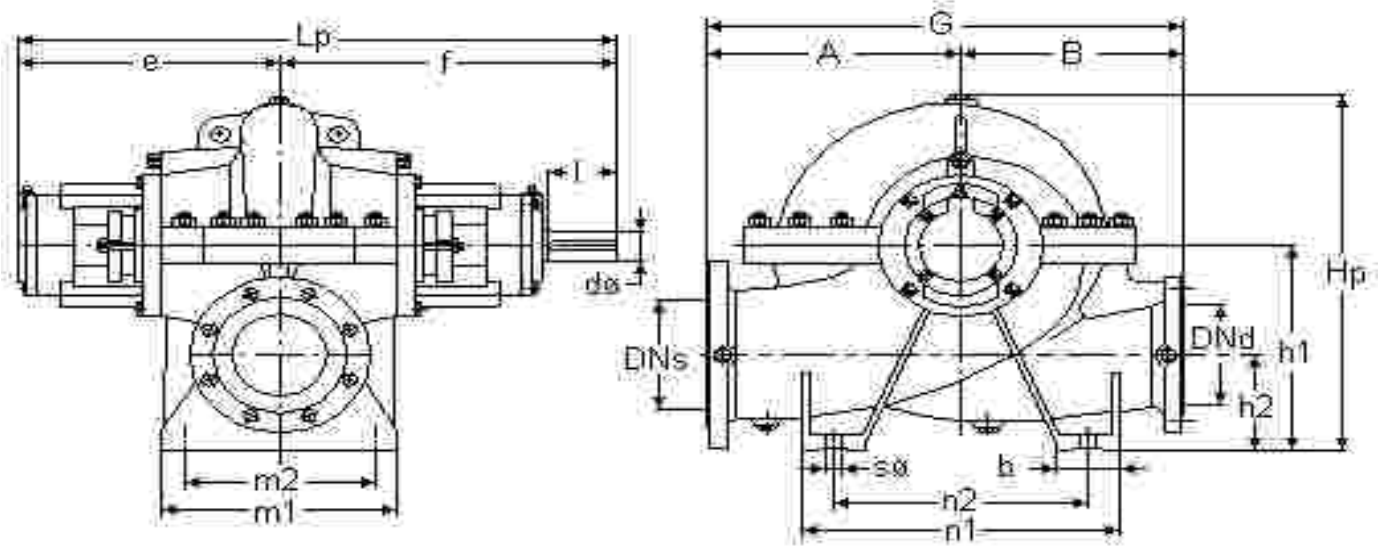
# overall dimensions (Compact Design - Only Mechanical seal is also available)



No	PUMP SIZE	FLANGES		Lp	e	f	h1	h2	Hp	A	B	G	b	m1	m2	n1	n2	s	I	dø	Group	Ball Bea.		Mec. Seal
		DNs	DNd																			Drive	Dead	
1	65-250	100	65				250	115	425	285	225	510	70	240	190	350	275	18	60		A			
2	80-250	125	80	507	212	295	280	140	485	300	275	575	80	234	190	400	330	18	80	32	B	NU 307	6307	ø 40
3	80-360	125	80				315	135	550	325	275	600												
4	100-250	150	100				545	230	315	155														
5	100-315	150	100	615	260	355	355	145	585	360	320	680	90	290	230	435	350	23	110	40	C	NU 309	6309	ø 50
6	150-250	200	150	665	285	380	375	175	635	400	325	725	100	340	270	500	400							
6	125-400	150	125	696	300	396	375	175	700	450	400	850	100	370	300	500	400	23	110	50	D	NU 311	6311	ø 60
8	150-315	200	150				375	175	645	400	350	750												
9	150-400	200	150				400	200	730	475	400	875												
10	150-500	200	150				450	250	870	550	500	1050												
11	200-315	250	200	725	315	410	430	205	730	450	375	825	100	430	360	500	400	23	110	50	D	NU 311	6311	ø 60
12	200-400	250	200				790	525	425	950	600	500												
13	200-500	250	200	822	337	485	475	220	870	550	500	1050	100	460	390	650	550	28	140	65	E	NU 313	6313	ø 70
14	250-315	300	250	842	347	495	500	225	860	525	450	975		480	410									
15	250-400	300	250	822	337	485	500	225	865	550	450	1000		460	390									
16	250-500	300	250	842	347	495	525	240	945	600	500	1100		480	410									
17	350-400	400	350	1000	435	565	610	295	1010	600	500	1100	150	600	500	750	600	28	140	75	F	NU 315	6315	ø 80



# overall dimensions (Soft Packing Design - Mechanical seal is also available)



No	PUMP SIZE	FLANGES		Lp	e	f	h1	h2	Hp	A	B	G	b	m1	m2	n1	n2	s0	l	d0	Group	Ball Bea.		Mec. Seal		
		DNs	DNd																			Drive	Dead			
1	65-250	100	65	585	260	325	250	115	425	285	225	510	70	240	190	350	275	18	60	28	A	6307	6307			
2	80-250	125	80	680	300	380	280	140	485	300	275	575	80	234	190	400	330	18	80	35	B	NU 308	6308	ø 55		
3	80-360	125	80				315	135	550	325	275	600														
4	100-250	150	100				715	315	400	155																
5	100-315	150	100	820	350	470	355	145	585	360	320	680	90	290	230	435	350	23	110	45	C	NU 310	6310	ø 65		
6	150-250	200	150	870	375	495	375	175	635	400	325	725	100	340	270	500	400									
7	125-400	150	125	945	415	530	375	175	700	450	400	850	100	370	300	500	400	23	110	55	D	NU 312	6312	ø 75		
8	150-315	200	150				375	175	645	400	350	750														
9	150-400	200	150				400	200	730	475	400	875														
10	150-500	200	150				450	250	870	550	500	1050														
11	200-315	250	200	975	430	545	430	205	730	450	375	825	100	430	360	500	400	23	110	55	D	NU 312	6312	ø 75		
12	200-400	250	200				790	525	425	950																
13	200-500	250	200				1042	447	595	475	220	870													550	500
14	250-315	300	250	1062	457	605	500	225	860	525	450	975	100	460	390	650	550	28	140	65	E	NU 314	6314	ø 85		
15	250-400	300	250																						460	390
16	250-500	300	250																						480	410
17	350-400	400	350																						1290	570